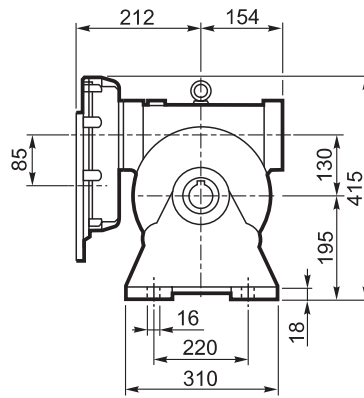
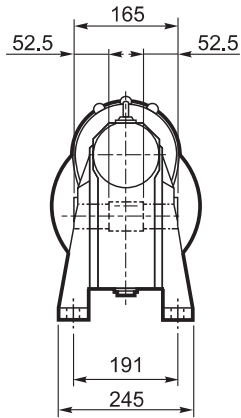
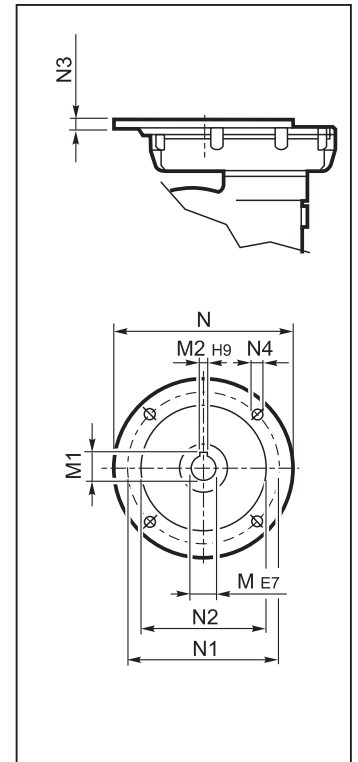


# VFR 130...P(IEC)

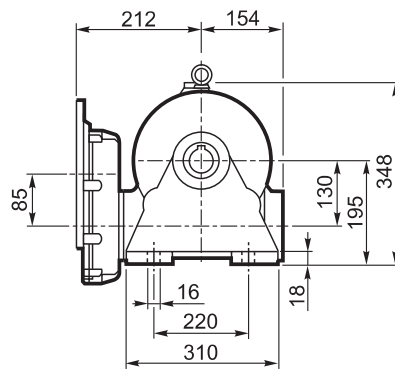
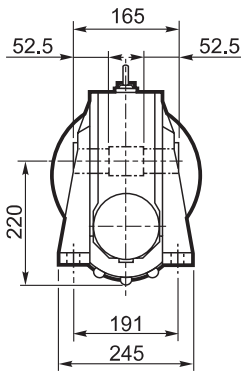
**A**



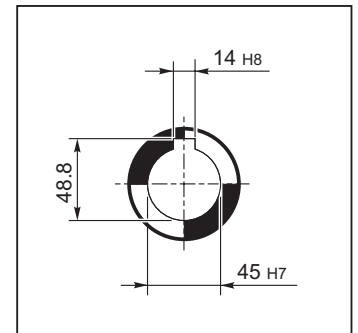
**INPUT**



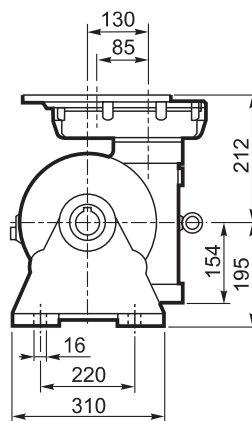
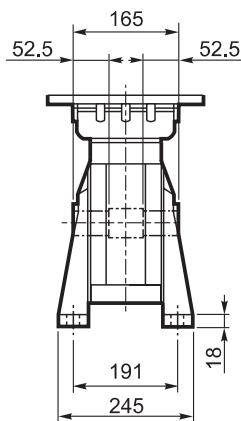
**N**



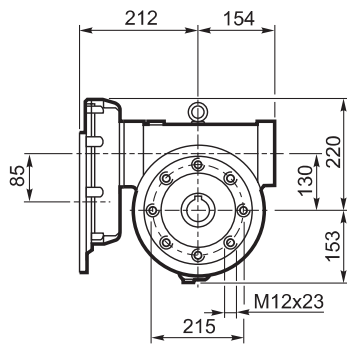
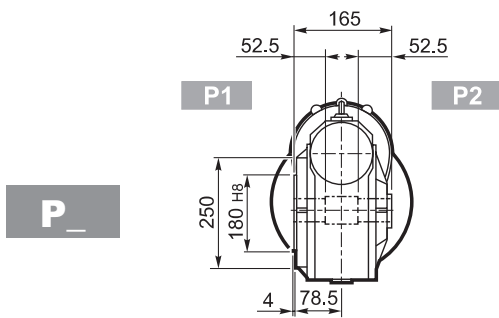
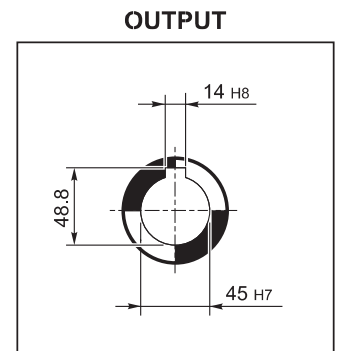
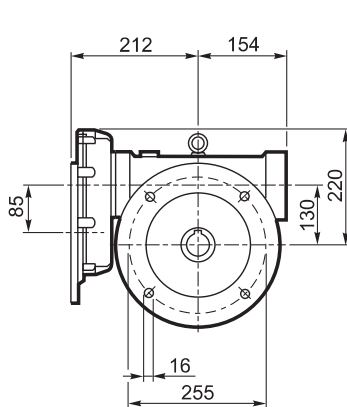
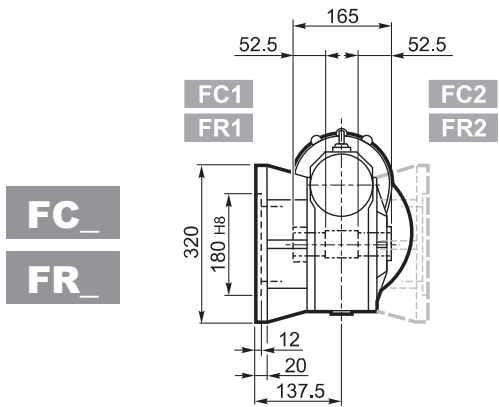
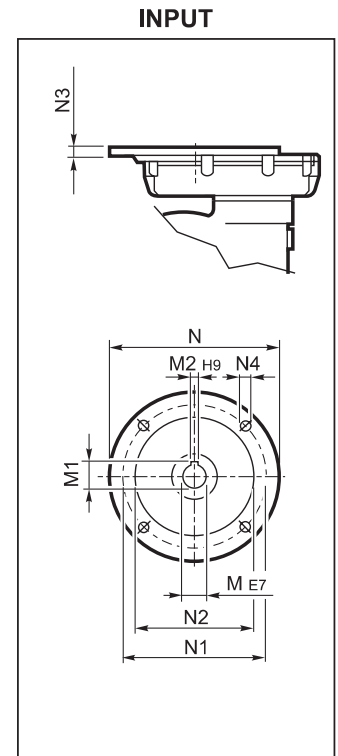
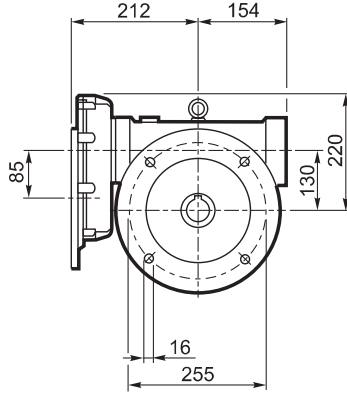
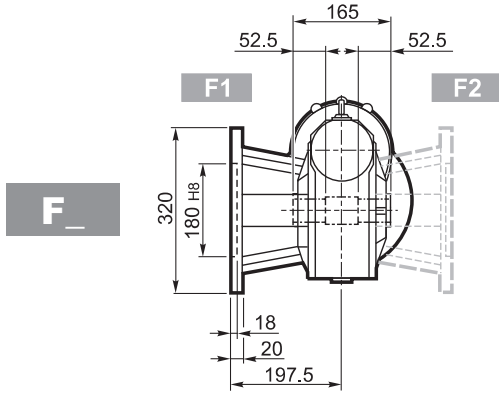
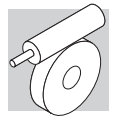
**OUTPUT**



**V**

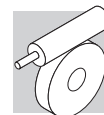


# VFR 130...P(IEC)



VFR 130										
		M	M1	M2	N	N1	N2	N3	N4	
VFR 130	P80 B5	19 K6	21.8	6	200	165	130	12	M10x25	57
VFR 130	P90 B5	24 K6	27.3	8	200	165	130	12	M10x25	
VFR 130	P100 B5	28 J6	29.1#	8	250	215	180	13	M12x35	
VFR 130	P112 B5	28 J6	29.1#	8	250	215	180	13	M12x35	

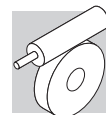
# Linguetta ribassata / Lowered key / Verkleinertes Paßfeder / Clavette à hauteur réduite




# VFR 130

1800 Nm

	i	$\eta_s$ %	$n_1 = 2800 \text{ min}^{-1}$							$n_1 = 1400 \text{ min}^{-1}$							
			$n_{2-1}$ $\text{min}^{-1}$	$M_{n2}$ Nm	$P_{n1}$ kW	$R_{n1}$ N	$R_{n2}$ N	$\eta_d$ %	$n_{2-1}$ $\text{min}^{-1}$	$M_{n2}$ Nm	$P_{n1}$ kW	$R_{n1}$ N	$R_{n2}$ N	$\eta_d$ %			
<b>VFR 130</b>	VFR 130_60	60	58	47	1050	6.4	1000	12400	81	23.3	1350	4.3	1000	13800	78	175	
	VFR 130_69	69	56	41	1050	5.6	1000	13200	80	20.3	1300	3.7	1000	13800	76		
	VFR 130_90	90	48	31	1250	5.4	1000	13200	76	15.6	1500	3.5	1000	13800	71		
	VFR 130_120	120	43	23.3	1200	4.1	1000	13200	72	11.7	1400	2.6	1000	13800	67		
	VFR 130_138	138	44	20.3	1150	3.4	1000	13200	72	10.1	1350	2.2	1000	13800	67		
	VFR 130_168	168	41	16.7	1080	2.7	1000	13200	69	8.3	1200	1.6	1000	13800	64		
	VFR 130_192	192	38	14.6	1050	2.4	1000	13200	67	7.3	1200	1.5	1000	13800	61		
	VFR 130_240	240	34	11.7	950	1.9	1000	13200	63	5.8	1150	1.2	1000	13800	57		
	VFR 130_300	300	30	9.3	800	1.4	1000	13200	58	4.7	900	0.83	1000	13800	53		
				$n_1 = 900 \text{ min}^{-1}$							$n_1 = 500 \text{ min}^{-1}$						
	VFR 130_60	60	58	15.0	1450	3.1	1000	13800	75	8.3	1600	1.9	1000	13800	74	175	
	VFR 130_69	69	56	13.0	1450	2.7	1000	13800	74	7.2	1550	1.6	1000	13800	72		
	VFR 130_90	90	48	10.0	1600	2.5	1000	13800	68	5.6	1800	1.6	1000	13800	66		
	VFR 130_120	120	43	7.5	1600	2.0	1000	13800	63	4.2	1800	1.3	1000	13800	61		
	VFR 130_138	138	44	6.5	1500	1.6	1000	13800	64	3.6	1600	1.0	1000	13800	61		
	VFR 130_168	168	41	5.4	1350	1.3	1000	13800	60	3.0	1450	0.78	1000	13800	58		
VFR 130_192	192	38	4.7	1300	1.1	1000	13800	58	2.6	1400	0.70	1000	13800	55			
VFR 130_240	240	34	3.8	1200	0.87	1000	13800	54	2.1	1250	0.54	1000	13800	51			
VFR 130_300	300	30	3.0	1000	0.64	1000	13800	49	1.7	1100	0.41	1000	13800	47			



# VFR 130

		i	J ( $\cdot 10^{-4}$ ) [Kgm <sup>2</sup> ]						
			P80	P90	P100	P112	P132		
<b>VFR 130</b>	VFR 130_30	30	5.3	5.3	5.2	5.2	—	5.7	
	VFR 130_45	45	4.5	4.5	4.4	4.4	—	4.9	
	VFR 130_60	60	4.2	4.1	4.1	4.1	—	4.6	
	VFR 130_69	69	4.1	4.0	4.0	4.0	—	4.5	
	VFR 130_90	90	4.2	4.1	4.1	4.1	—	4.6	
	VFR 130_120	120	4.0	3.9	4.0	4.0	—	4.4	
	VFR 130_138	138	3.8	3.8	3.7	3.7	—	4.2	
	VFR 130_168	168	3.8	3.7	3.7	3.7	—	4.1	
	VFR 130_192	192	3.7	3.7	3.6	3.6	—	4.1	
	VFR 130_240	240	3.7	3.6	3.6	3.6	—	4.1	
VFR 130_300	300	3.9	3.8	3.8	3.8	—	4.3		