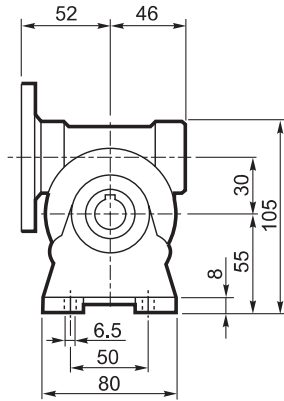
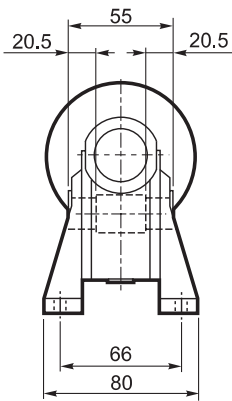
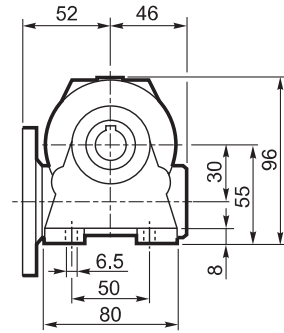
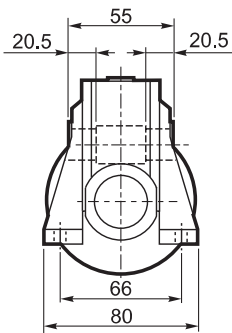


VF 30...P(IEC)

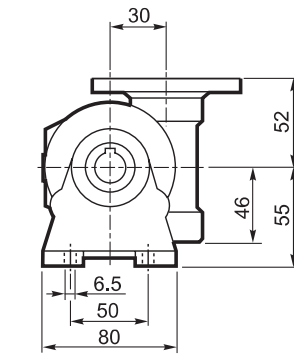
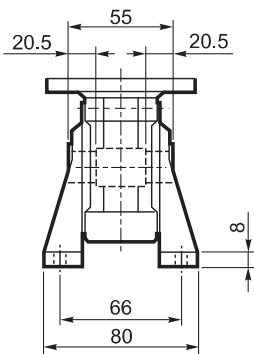
A



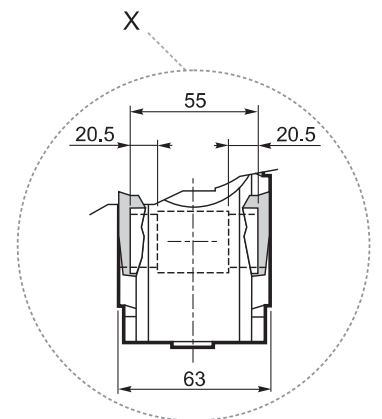
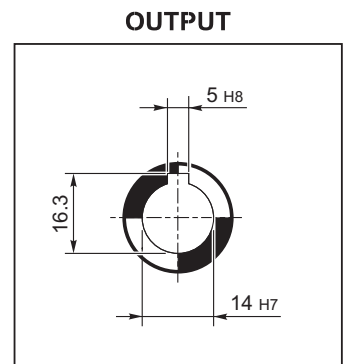
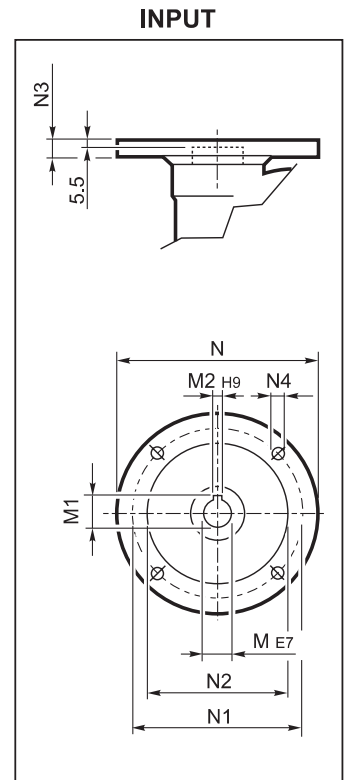
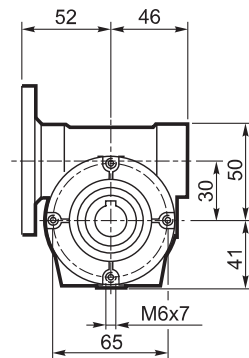
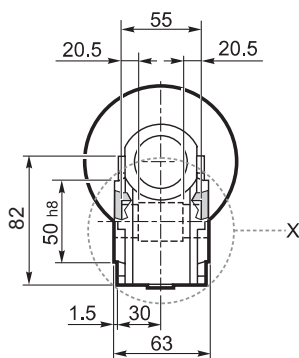
N

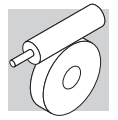


V

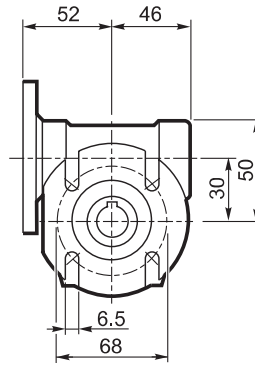
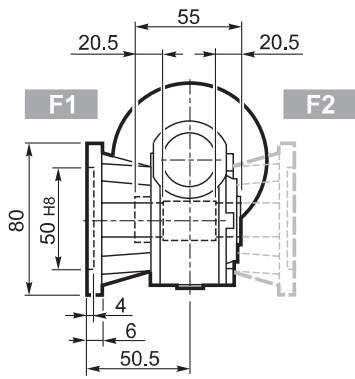


P

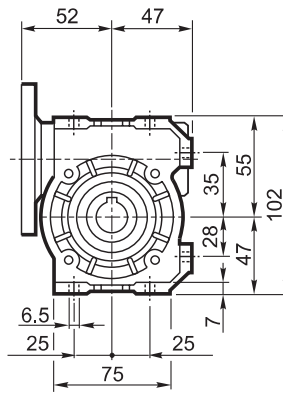
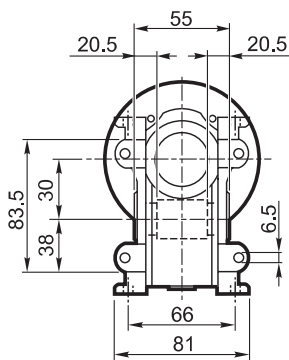




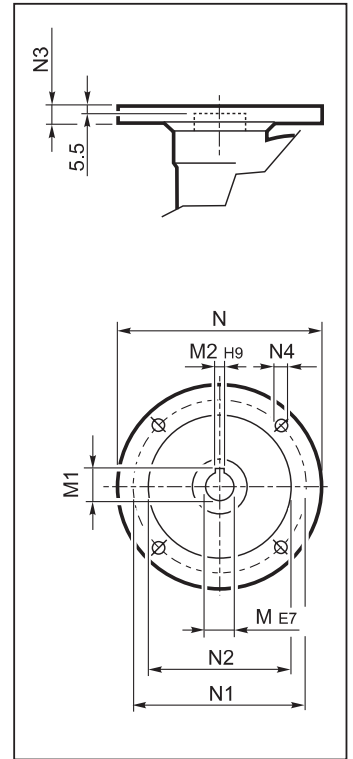
F



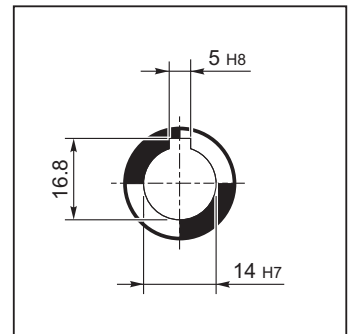
U



INPUT

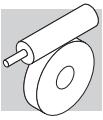


OUTPUT



VF 30

		M	M1	M2	N	N1	N2	N3	N4	
VF 30	P56 B5	9	10.4	3	120	100	80	7	7	1.1
VF 30	P56 B14	9	10.4	3	80	65	50	7	5.5	
VF 30	P63 B5	11	12.8	4	140	115	95	8	9.5	
VF 30	P63 B14	11	12.8	4	90	75	60	6	5.5	



VF 30

24 Nm

	i	η_s %	n_{2-1}	M_{n2}	P_{n1}	R_{n1}	R_{n2}	η_d	n_{2-1}	M_{n2}	P_{n1}	R_{n1}	R_{n2}	η_d	
			min ⁻¹	Nm	kW	N	N	%	min ⁻¹	Nm	kW	N	N	%	
			$n_1 = 2800 \text{ min}^{-1}$						$n_1 = 1400 \text{ min}^{-1}$						
VF 30	VF 30_7	7	69	400	12	0.58	120	510	87	200	16	0.41	140	630	84
	VF 30_10	10	64	280	12	0.41	70	620	85	140	16	0.30	80	770	81
	VF 30_15	15	56	187	14	0.34	—	720	81	93	18	0.24	—	910	76
	VF 30_20	20	51	140	14	0.26	—	820	78	70	18	0.19	—	1030	73
	VF 30_30	30	41	93	15	0.21	—	960	71	47	20	0.15	—	1200	65
	VF 30_40	40	36	70	14	0.16	—	1090	66	35	19	0.12	—	1360	60
	VF 30_60	60	29	47	14	0.12	—	1270	59	23.3	19	0.09	—	1590	51
	VF 30_70	70	26	40	11	0.08	—	1380	55	20.0	15	0.07	—	1600	48
				$n_1 = 900 \text{ min}^{-1}$						$n_1 = 500 \text{ min}^{-1}$					
	VF 30_7	7	69	129	18	0.30	150	730	82	71	20	0.19	150	920	81
	VF 30_10	10	64	90	18	0.22	150	900	79	50	20	0.14	150	1120	77
	VF 30_15	15	56	60	20	0.17	—	1060	74	33	22	0.11	150	1320	71
	VF 30_20	20	51	45	20	0.14	—	1200	70	25.0	22	0.09	150	1490	67
	VF 30_30	30	41	30	22	0.12	—	1400	61	16.7	24	0.07	—	1700	58
VF 30_40	40	36	23	20	0.09	—	1590	56	12.5	22	0.06	—	1700	53	
VF 30_60	60	29	15	20	0.07	—	1650	48	8.3	22	0.05	—	1700	44	
VF 30_70	70	26	13	17	0.05	—	1700	45	7.0	19	0.04	—	1700	41	

VF 30

		$J (\cdot 10^{-4}) [\text{Kgm}^2]$					
		P56	P63				HS
VF 30	VF 30_7	7	0.08	0.07	—	—	0.04
	VF 30_10	10	0.07	0.06	—	—	0.03
	VF 30_15	15	0.07	0.06	—	—	0.03
	VF 30_20	20	0.06	0.06	—	—	0.03
	VF 30_30	30	0.06	0.06	—	—	0.03
	VF 30_40	40	0.06	0.06	—	—	0.03
	VF 30_60	60	0.06	0.05	—	—	0.02
VF 30_70	70	0.06	—	—	—	0.02	