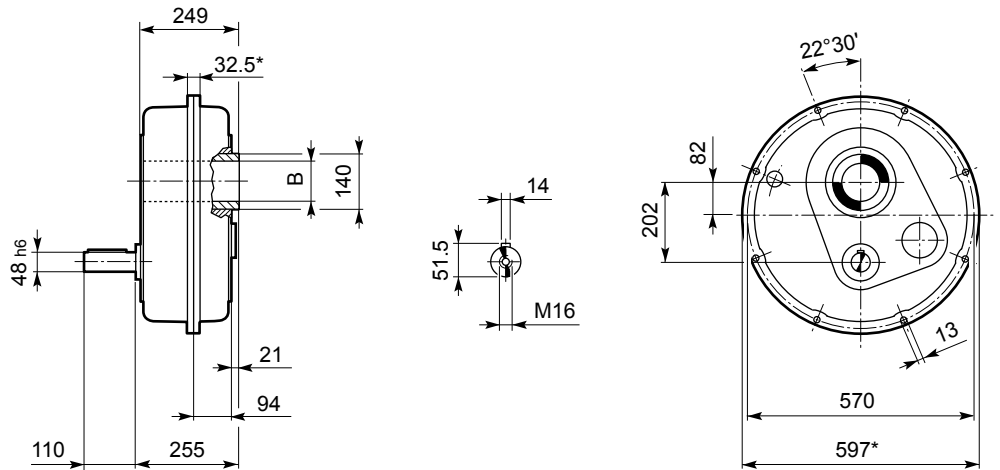




TA 80

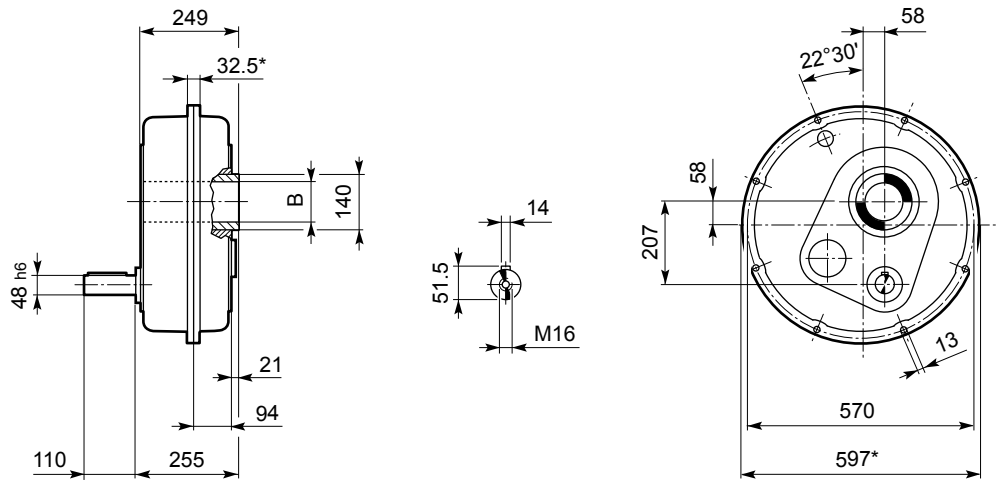
TA 80

TA 80	80	145
	100	143

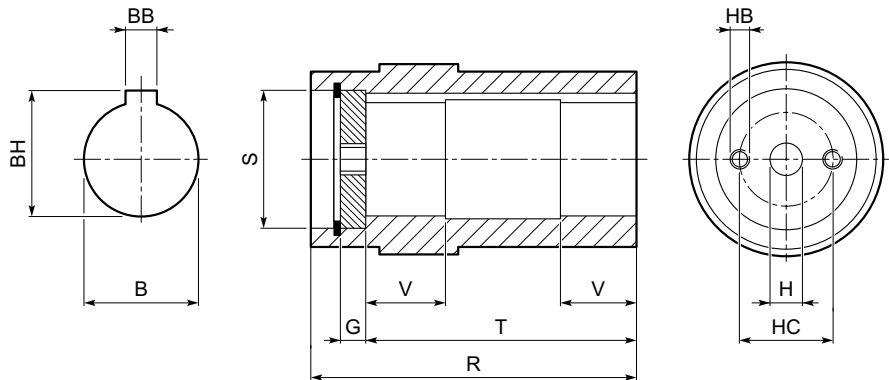


TA 80_D

TA 80	80 D	160
	100 D	158



OUTPUT



		B _{G7}	BB	BH	G	H	HB	HC	R	S	T	V
TA 80	80	80	22	85.4	18	22	M16	60	249	95	219	55
	100	100	28	106.4	20	26	M20	80	249	120	217	55

* Le superfici sono grezze

* Surfaces are unmachined




* Oberflächen nicht bearbeitet

* Les surfaces sont non-usinées



TA 80

7000 Nm

 	i	$n_1 = 1400 \text{ min}^{-1}$				$n_1 = 900 \text{ min}^{-1}$				$n_1 = 500 \text{ min}^{-1}$					
		n_2 min^{-1}	Mn_2 Nm	Pn_1 kW	Rn_1 N	n_2 min^{-1}	Mn_2 Nm	Pn_1 kW	Rn_1 N	n_2 min^{-1}	Mn_2 Nm	Pn_1 kW	Rn_1 N		
TA 80	80 100	5	280	3700	111	4550	180	4200	81	5100	100	5000	54	6400	26
TA 80	80 100 D	10	140	5500	85	4200	90	6100	60	4700	50	6300	35	5900	
		12.5	112	5500	68	4200	72	6100	48	4700	40	6300	28	5900	
		15	93	6100	63	4200	60	6300	42	4700	33	6600	24	5900	
		20.3	69	6100	46	4200	44	6300	31	4700	24.6	6600	17.9	5900	
		25	56	6300	39	4200	36	6600	26	4700	20.0	7000	15.4	5900	
31.3	45	6300	31	4200	28.8	6600	21	4700	16.0	7000	12.3	5900			