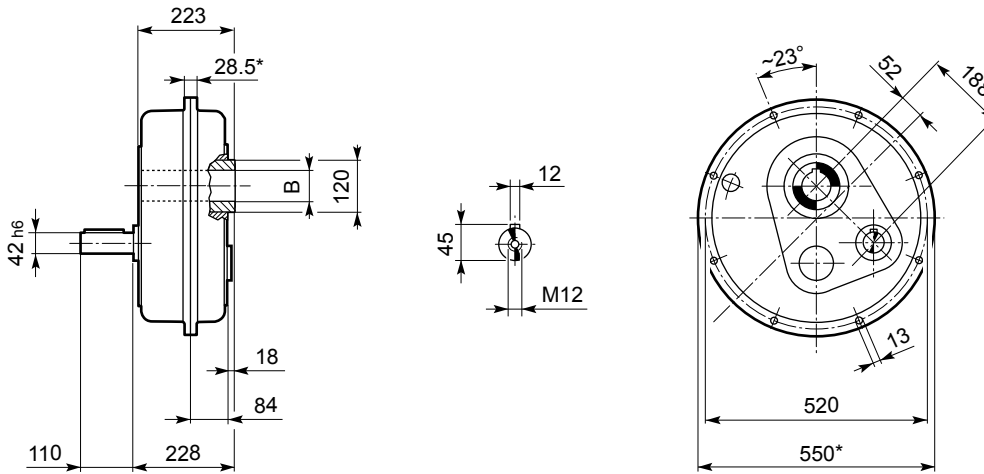


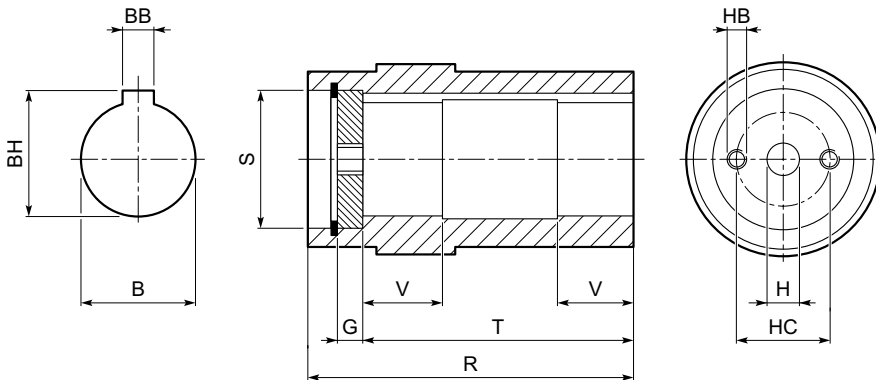
TA 70

TA 70	70	108
	85	106



TA 70_D

TA 70	70 D	121
	85 D	120



OUTPUT

		B G7	BB	BH	G	H	HB	HC	R	S	T	V
TA 70	70	70	20	74.9	16	22	M16	50	223	85	193	50
	85	85	22	90.4	18	22	M16	65	223	100	193	50

* Le superfici sono grezze

* Surfaces are unmachined




* Oberflächen nicht bearbeitet

* Les surfaces sont non-usinées



5100 Nm

TA 70

 	i	$n_1 = 1400 \text{ min}^{-1}$				$n_1 = 900 \text{ min}^{-1}$				$n_1 = 500 \text{ min}^{-1}$				
		n_2 min ⁻¹	Mn_2 Nm	Pn_1 kW	Rn_1 N	n_2 min ⁻¹	Mn_2 Nm	Pn_1 kW	Rn_1 N	n_2 min ⁻¹	Mn_2 Nm	Pn_1 kW	Rn_1 N	
TA 70 70 85	5	280	2600	78	3700	180	3000	58	4200	100	4000	43	5200	25
TA 70 70 85 D	10	140	3800	59	3400	90	4400	44	3800	50	4500	25	4750	
	12.2	115	4000	51	3400	74	4400	36	3800	41	4500	20	4750	
	15	93	4400	45	3400	60	4500	30	3800	33	4900	18.0	4750	
	20.3	69	4500	34	3400	44	4600	22	3800	24.6	5000	13.6	4750	
	25	56	4600	28	3400	36	4900	19.4	3800	20.0	5100	11.2	4750	
	30.4	46	4600	23	3400	29.6	4900	16.0	3800	16.4	5100	9.2	4750	