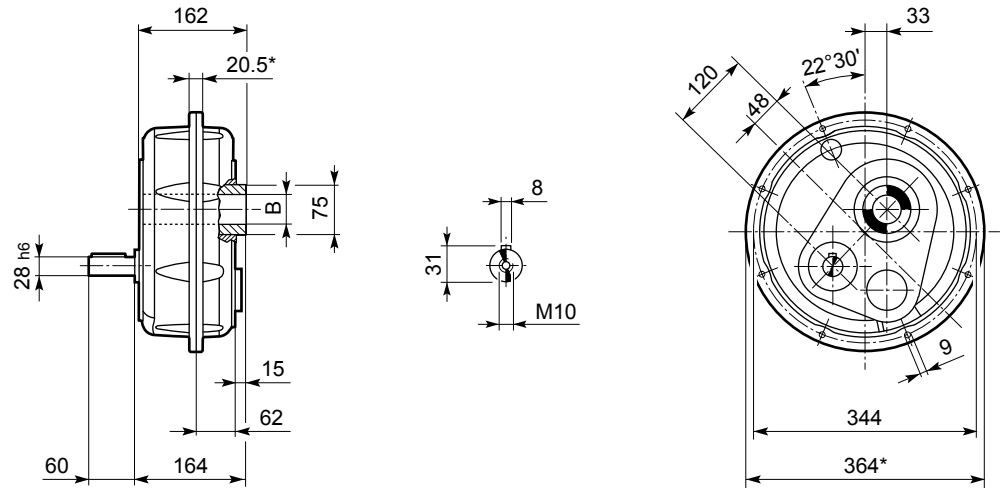




# TA 45

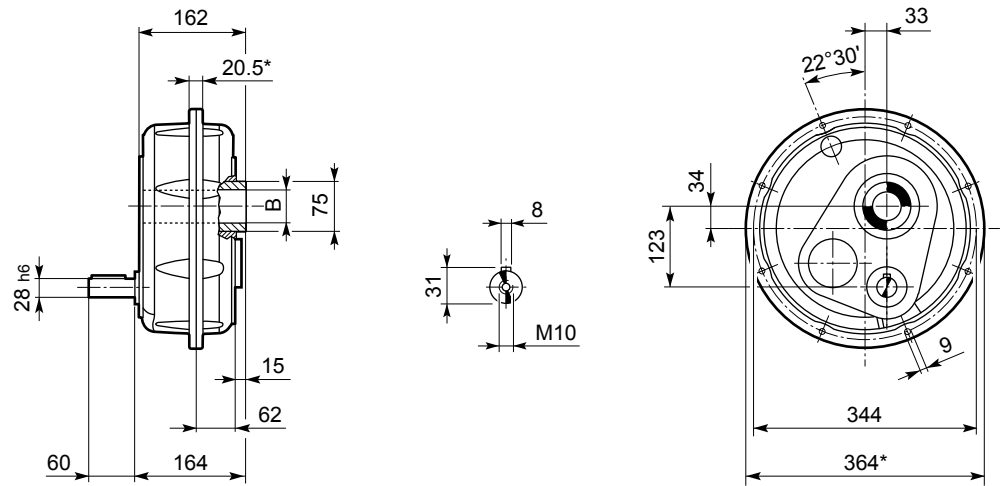
## TA 45

TA 45	45	34
	50	34
	55	33

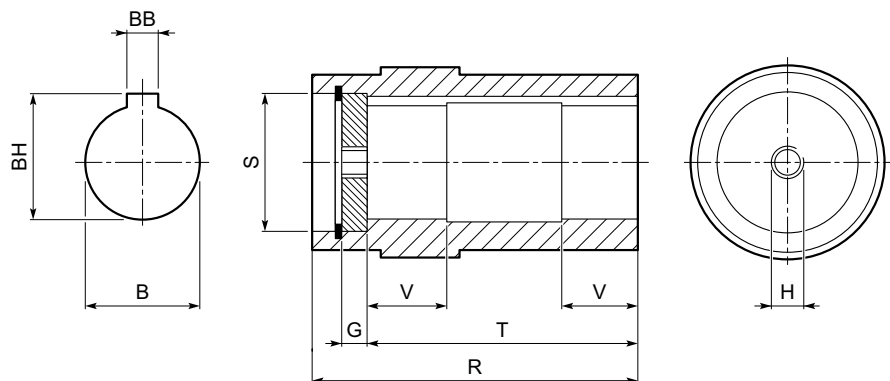


## TA 45\_D

TA 45	45	38
	50 D	38
	55	37



## OUTPUT



		B G7	BB	BH	G	H	R	S	T	V
TA 45	45	45	14	48.8	14	M16	162	60	140	35
	50	50	14	53.8	14	M16	162	60	140	35
	55	55	16	59.8	14	M16	162	65	140	35

\* Le superfici sono grezze




\* Surfaces are unmachined

\* Oberflächen nicht bearbeitet

\* Les surfaces sont non-usinées



**TA 45** **1400 Nm**

 	i	$n_1 = 1400 \text{ min}^{-1}$				$n_1 = 900 \text{ min}^{-1}$				$n_1 = 500 \text{ min}^{-1}$				
		$n_2$ min <sup>-1</sup>	Mn <sub>2</sub> Nm	Pn <sub>1</sub> kW	Rn <sub>1</sub> N	$n_2$ min <sup>-1</sup>	Mn <sub>2</sub> Nm	Pn <sub>1</sub> kW	Rn <sub>1</sub> N	$n_2$ min <sup>-1</sup>	Mn <sub>2</sub> Nm	Pn <sub>1</sub> kW	Rn <sub>1</sub> N	
TA 45 45 50 55	5	280	850	26	1500	180	950	18.4	1700	100	1100	11.8	2.150	22
TA 45 45 50 55 D	10	140	1000	15.4	1150	90	1200	11.9	1300	50	1300	7.2	1650	
	12.2	115	1100	13.9	1150	74	1200	9.7	1300	41	1300	5.9	1650	
	15	93	1200	12.3	1150	60	1250	8.3	1300	33	1300	4.8	1650	
	19.7	71	1250	9.8	1150	46	1300	6.5	1300	25.4	1350	3.8	1650	
	25	56	1300	8.0	1150	36	1350	5.4	1300	20.0	1400	3.1	1650	
	30.4	46	1300	6.6	1150	29.6	1350	4.4	1300	16.4	1400	2.5	1650	