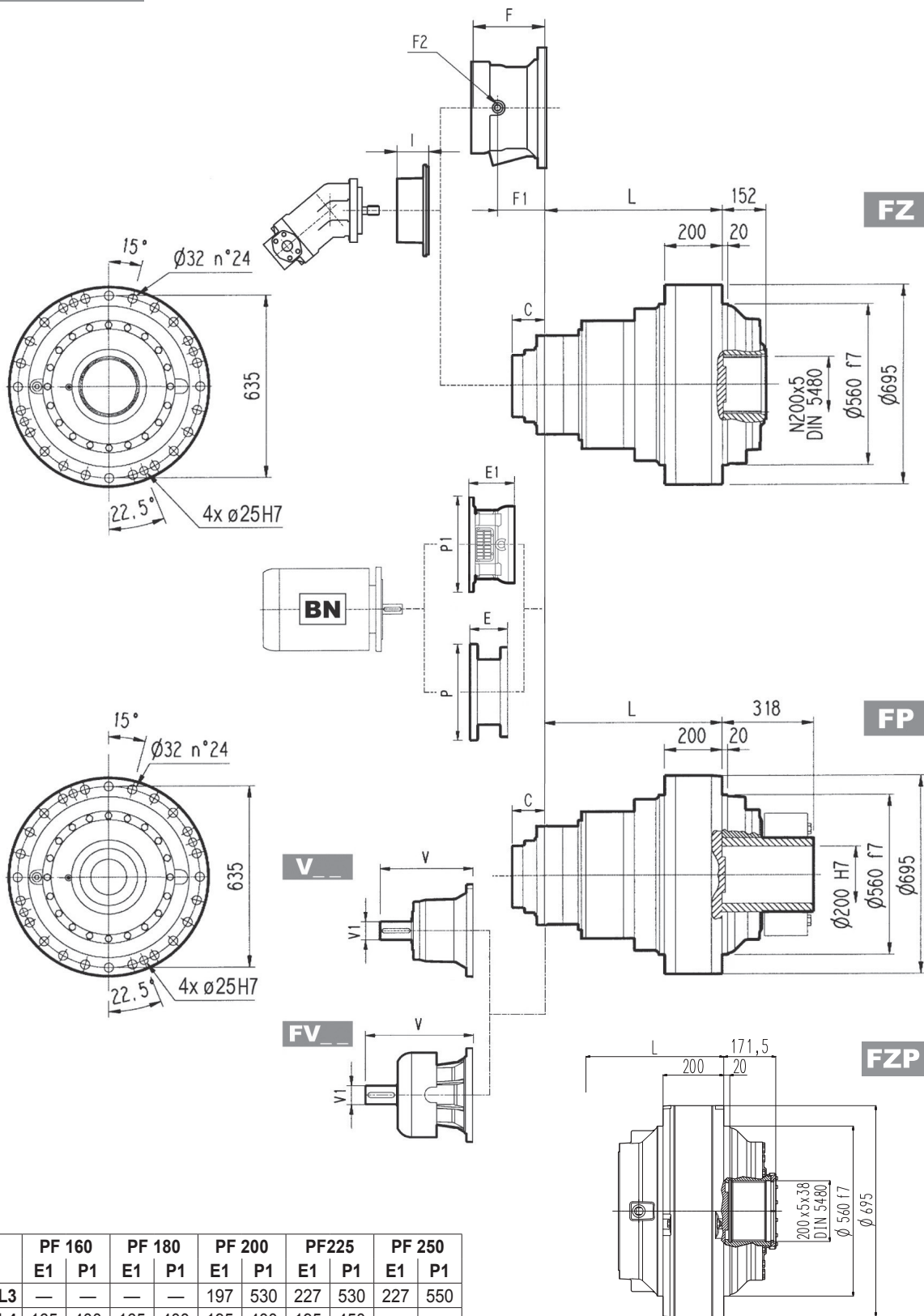


# 317M L

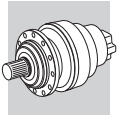


	PF 160		PF 180		PF 200		PF225		PF 250	
	E1	P1	E1	P1	E1	P1	E1	P1	E1	P1
317M L3	—	—	—	—	197	530	227	530	227	550
317M L4	165	400	165	400	195	400	195	450	—	—

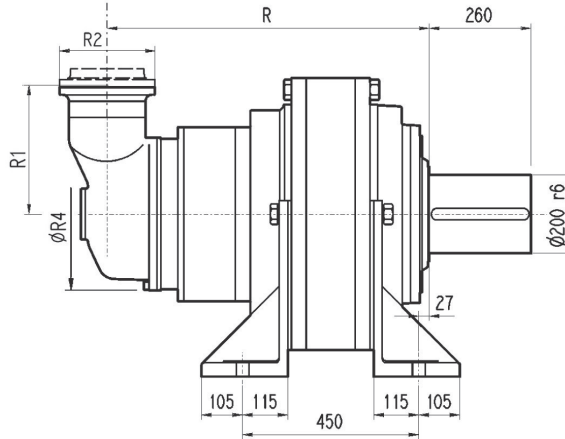
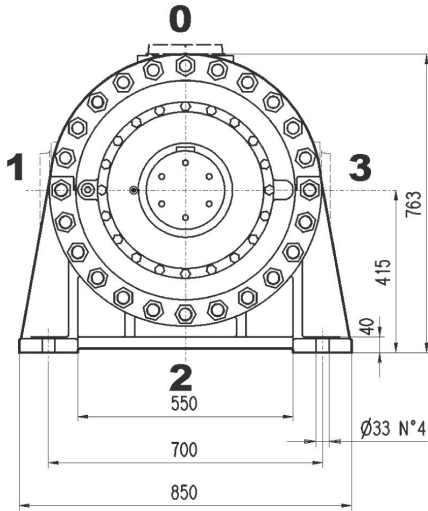
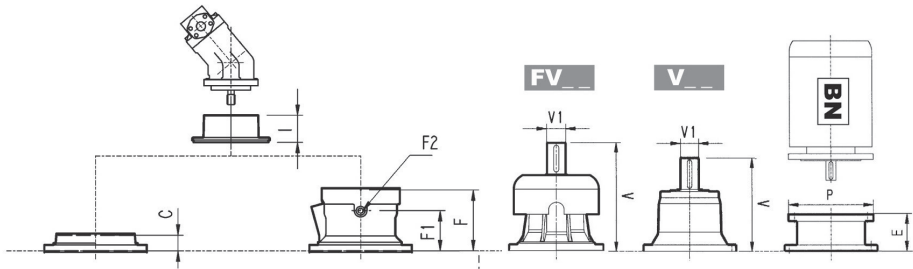
Bemerkung: Für R Design kontaktieren Sie den technischen Service von Bonfiglioli

**FP**  $M_{2max} = 242000 \text{ Nm}$

	P132		P160		P180		P200		P225		P250	
	E	P	E	P	E	P	E	P	E	P	E	P
317 L3	—	—	—	—	196	350	186	400	216	450	216	550
317 L4	114	300	144	350	144	350	174	400	—	—	—	—

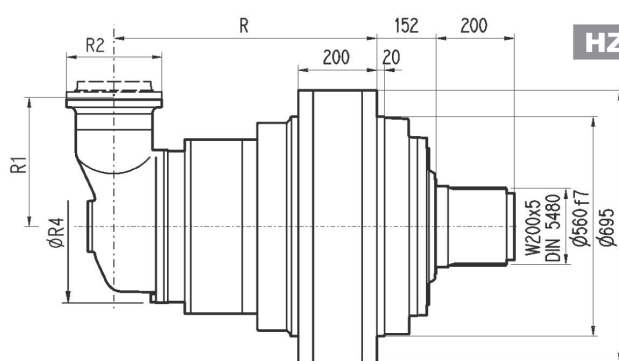
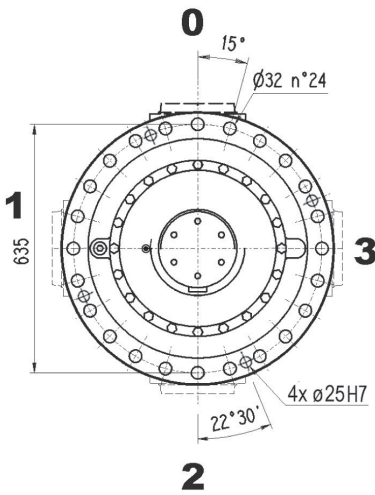
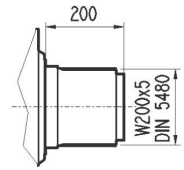


# 317M R



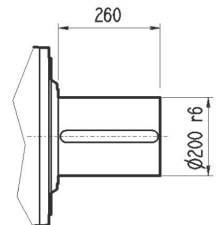
**PC**

**PZ**



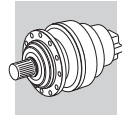
**HZ**

**HC**

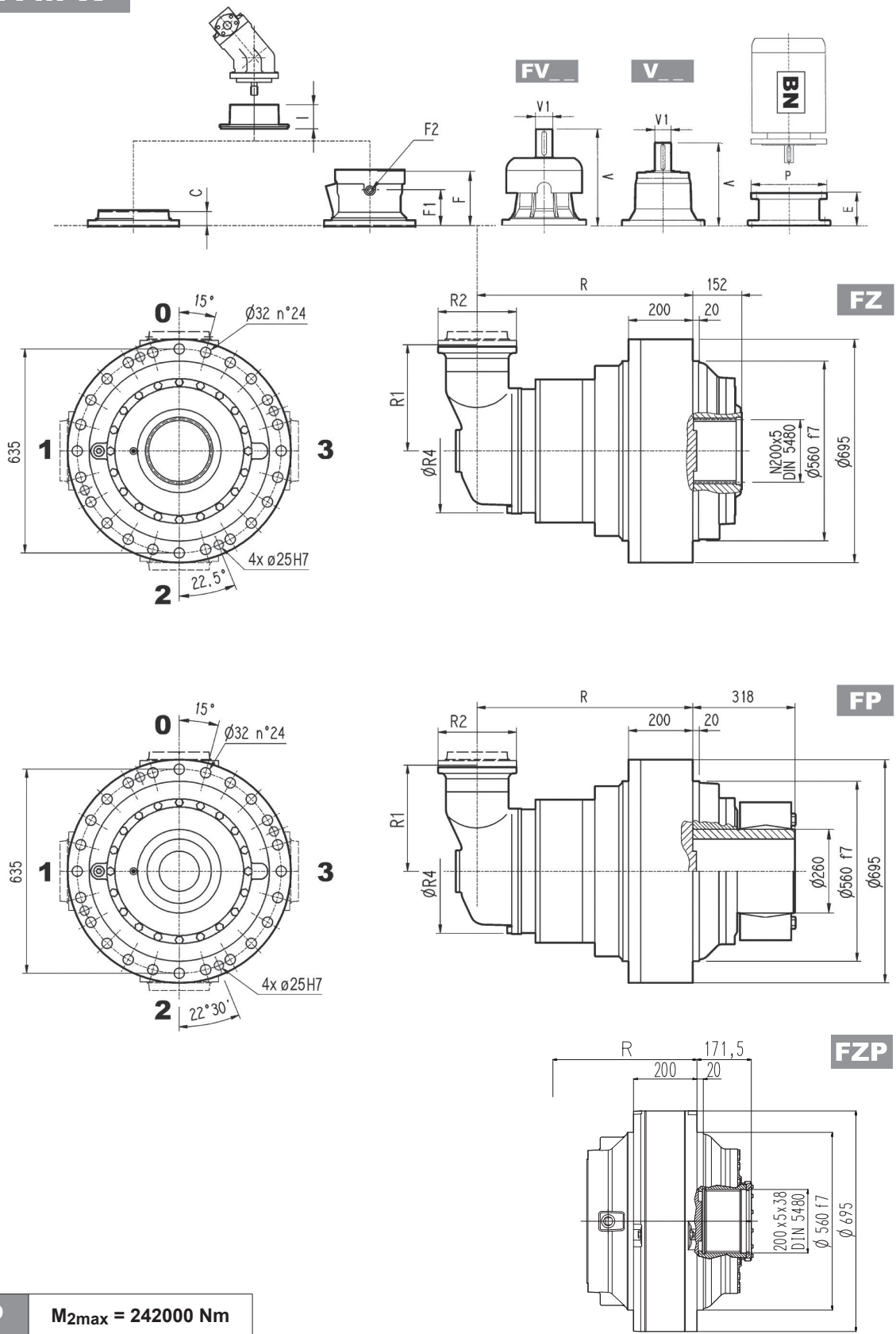


	R				R1	R2	R4	Kg			
	PC-PZ	HC-HZ	FZ - FZP	FP				PC-PZ	HC-HZ	FZ - FZP	FP
317 R3 (B)	853	701	701	701	345	292	400	1210	1060	1010	1060
317 R3 (C)	853	701	701	701	390	292	480	1220	1070	1020	1070
317 R4	892	740	740	740	225	245	345	1190	1040	990	1040

	V			V1			V			V1			C	Input	I	F	F1	F2	Type	Input	Kg
	V	V1	Kg	V	V1	Kg	V	V1	Kg	V	V1	Kg									
317 R3 (B)	307	60	23	—	—	—	357	60	28	—	—	—	45	B	↔	195	147	1/4 G	6	B	28
317 R3 (C)	307	60	23	—	—	—	357	60	28	—	—	—	45	B	↔	195	147	1/4 G	6	B	28
317 R4	239	48	15	—	—	—	276	48	17	—	—	—	37	A	↔	105	65	1/4 G	4	A	10

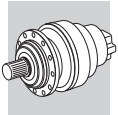


# 317M R

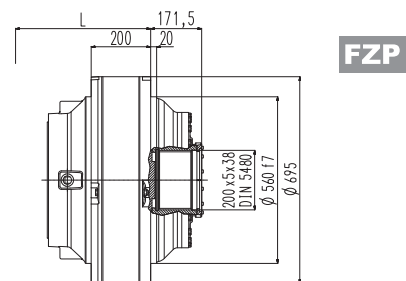
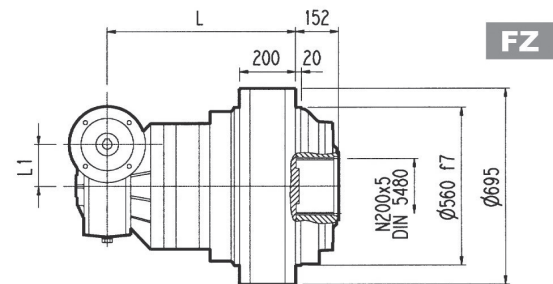
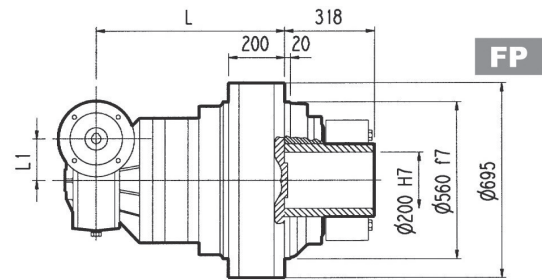
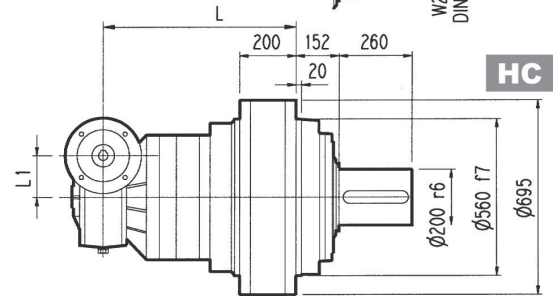
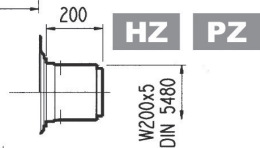
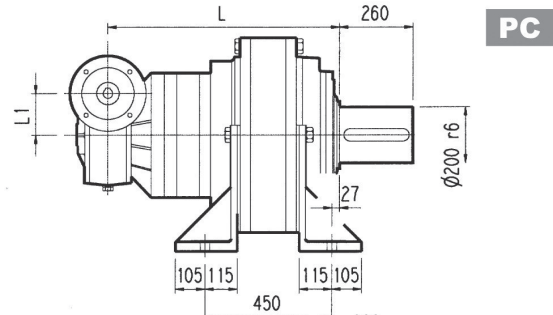
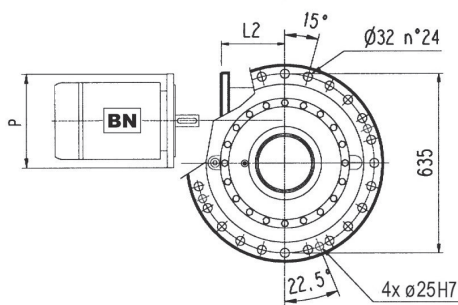
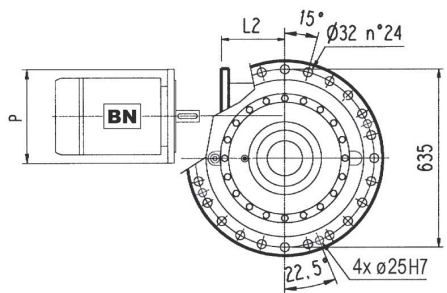
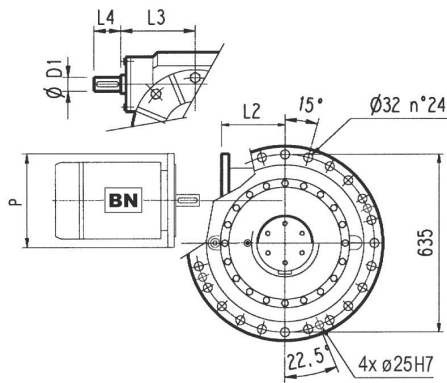
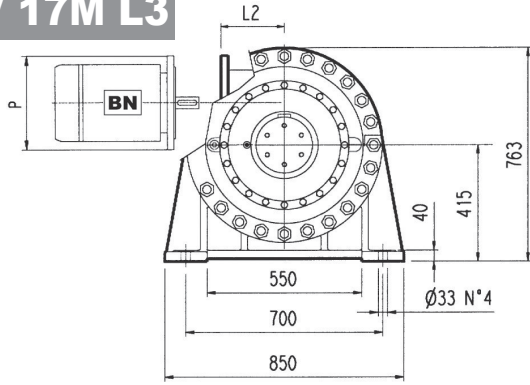


**FP**  $M_{2max} = 242000 \text{ Nm}$

	P132		P160		P180		P200		P225		P250	
	E	P	E	P	E	P	E	P	E	P	E	P
317 R3 (B)	—	—	—	—	152	350	182	400	212	450	193	550
317 R3 (C)	—	—	—	—	152	350	182	400	212	450	193	550
317 R4	114	300	144	350	144	350	174	400	—	—	—	—



# 3/V 17M L3

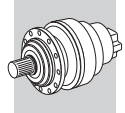


**FP** M<sub>2max</sub> = 242000 Nm

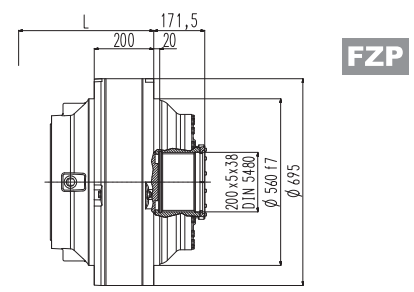
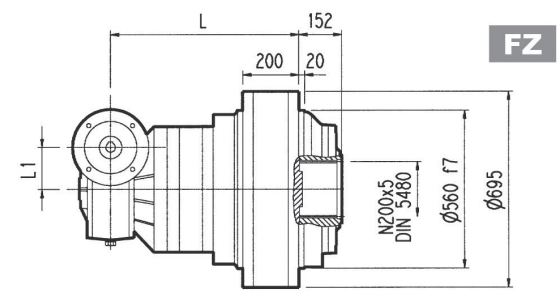
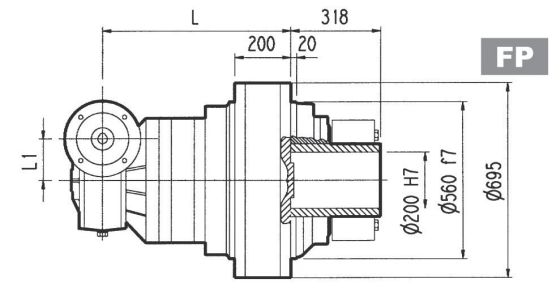
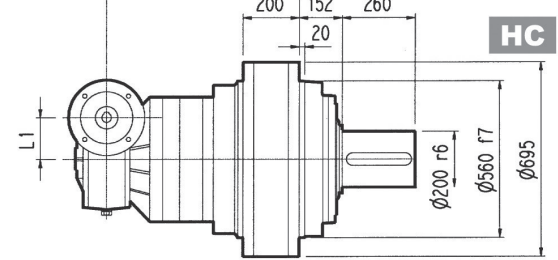
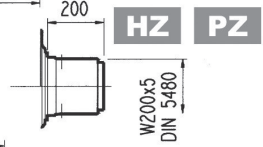
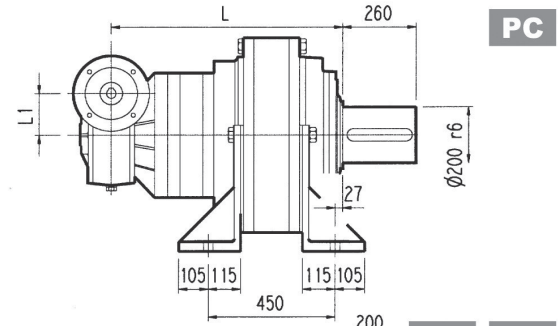
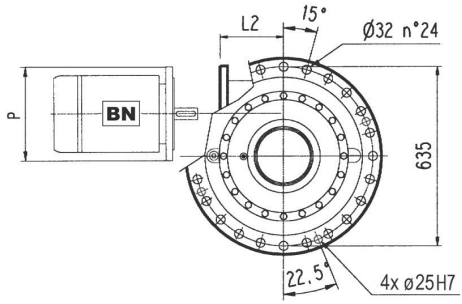
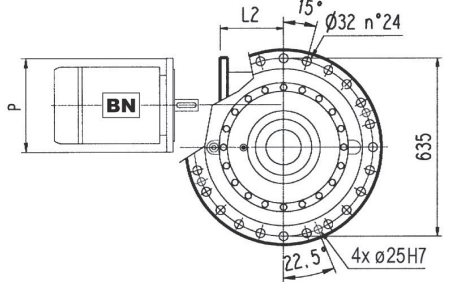
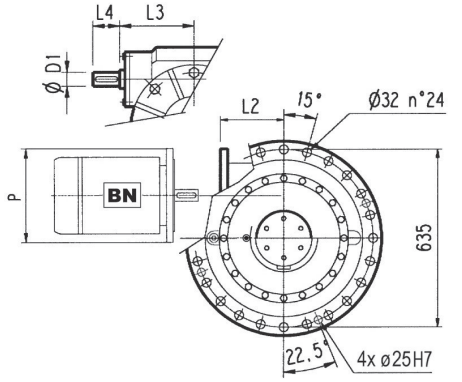
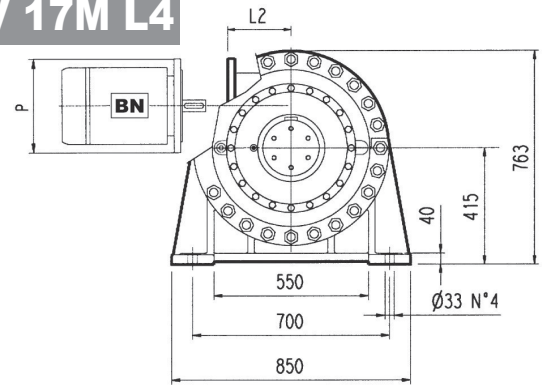
	L				L1	D1	L3	L4	Kg				
	PC - PZ	HC - HZ	FZ - FZP	FP						PC - PZ	HC - HZ	FZ - FZP	FP
3/V 17 L3	894	745	745	745	250	55	276	110		1400	1250	1200	1250

	P132		P160		P180		P200		P225	
	L2	P	L2	P	L2	P	L2	P	L2	P
3/V 17 L3	531	300	506	350	506	350	531	400	536	450





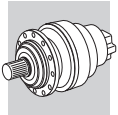
# 3/V 17M L4



**FP** M<sub>2max</sub> = 242000 Nm

	L				L1	D1	L3	L4	Kg				
	PC - PZ	HC - HZ	FZ - FZP	FP						PC - PZ	HC - HZ	FZ - FZP	FP
3/V 17 L4	975	823	823	823	185.4	40	214.5	70		1250	1090	1040	1090

	P100		P112		P132		P160		P180	
	P	L2	P	L2	P	L2	P	L2	P	L2
3/V 17 L4	250	217	250	217	300	217	350	217	350	217



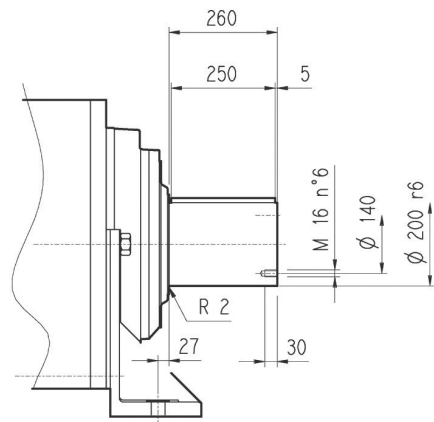
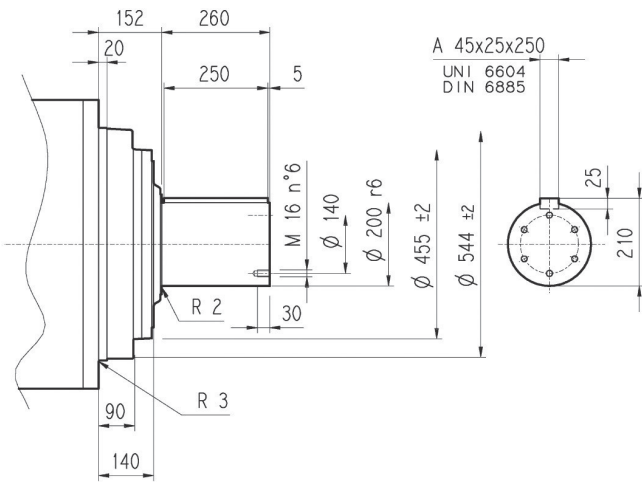
# 317M L

# 317M R

# 3/V 17M L

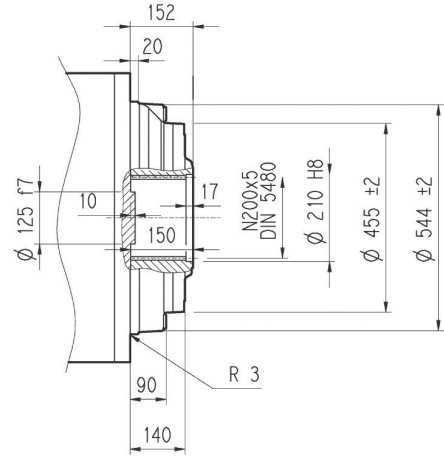
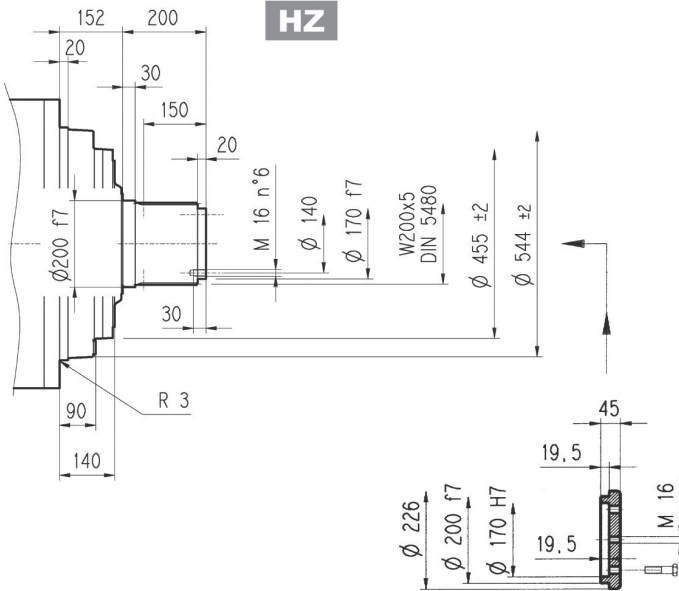
## HC

## PC



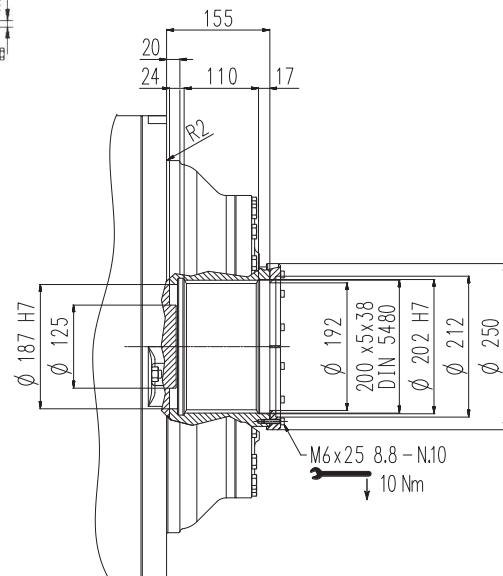
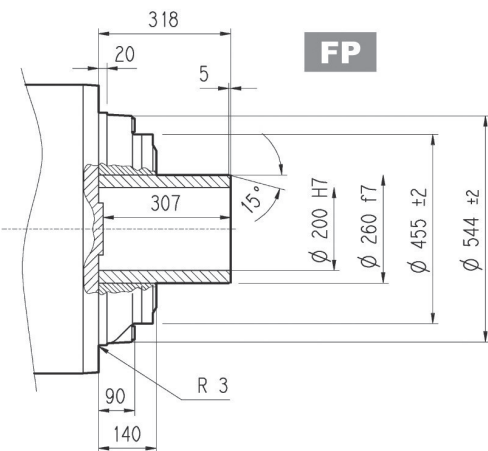
## HZ

## FZ



## FP

## FZP

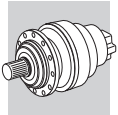


## FP

$M_{2max} = 242000 \text{ Nm}$

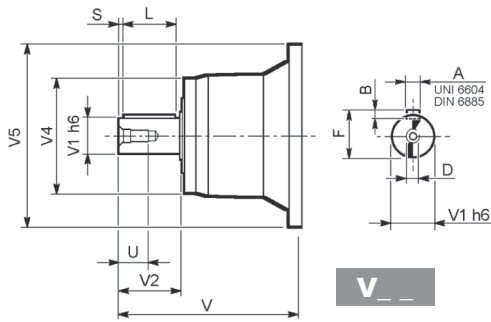




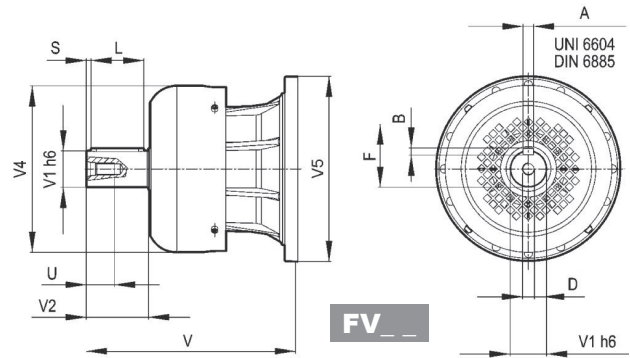


## 317M L

## 317M R



**V** \_ \_

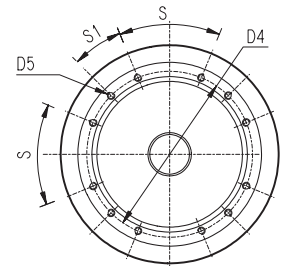
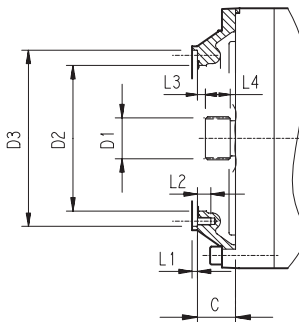
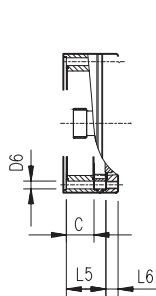


**FV** \_ \_

		V	V1	V2	V4	V5	A	B	F	L	S	D	U
317 L2	V11B	343	80	130	200	445	22	14	85	110	10	M16	36
	FV11B	451	80	130	347.5	445	22	14	85	110	10	M16	36
317 L3	V07B	315	80	130	200	345	22	14	85	110	10	M16	36
	FV07B	375	80	130	347.5	348	22	14	85	110	10	M16	36
	V07A	313	60	105	155	345	18	11	64	90	7.5	M16	36
317 L4	FV07A	363	60	105	309	348	18	11	64	90	7.5	M16	36
	V05B	239	48	82	155	245	14	9	51.5	70	6	M16	36
317 R3 (B) (C)	FV05B	276	48	82	219.5	244	14	9	51.5	70	6	M16	36
	V06B	307	60	105	155	292	18	11	64	90	7.5	M16	40
317 R4	FV06B	357	60	105	309	292	18	11	64	90	7.5	M16	36
	V05B	239	48	82	155	245	14	9	51.5	70	6	M16	36
317 R4	FV05B	276	48	82	219.5	244	14	9	51.5	70	6	M16	36

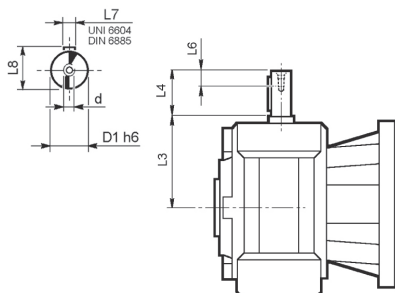
## 317M L

## 317M R

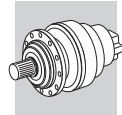


		C	D1	D2	D3	D4	D5	D6	L1	L2	L3	L4	L5	L6	S	S1	Input
317 L1	V9AF	181	120x3 DIN 5480	365	390 g7	415	M16 n°18	—	4	30	3	65	—	—	20°	20°	F
317 L2	V9AD	75	80x74 DIN 5482	270	335 H7	314	M16 n°8	—	5	30	9.5	40	—	—	60°	30°	D
317 L3	V9AB	51	58x53 DIN 5482	195	236 H7	222	M10 n°12	—	4	18	11	22	—	—	45°	22.5°	B
317 L4	V9AA	37	40x36 DIN 5482	140	178 H7	165	M10 n°8	—	4	18	9	18	—	—	45°	45°	A
317 R4	V9AA	37	40x36 DIN 5482	140	178 H7	165	M10 n°8	11	4	18	9	18	—	—	45°	45°	A
317 R3 (B) (C)	V9AB	45	58x53 DIN 5482	195	236 H7	222	M10 n°12	—	4	18	11	22	—	—	45°	22.5°	B

## 3/V 17M L



	D1 h6	L3	L4	L6	L7	L8	d
3/V 17 L3_HS	55	276	110	40	16	59	M16
3/V 17 L4_HS	40	214.5	70	20	12	43	M8

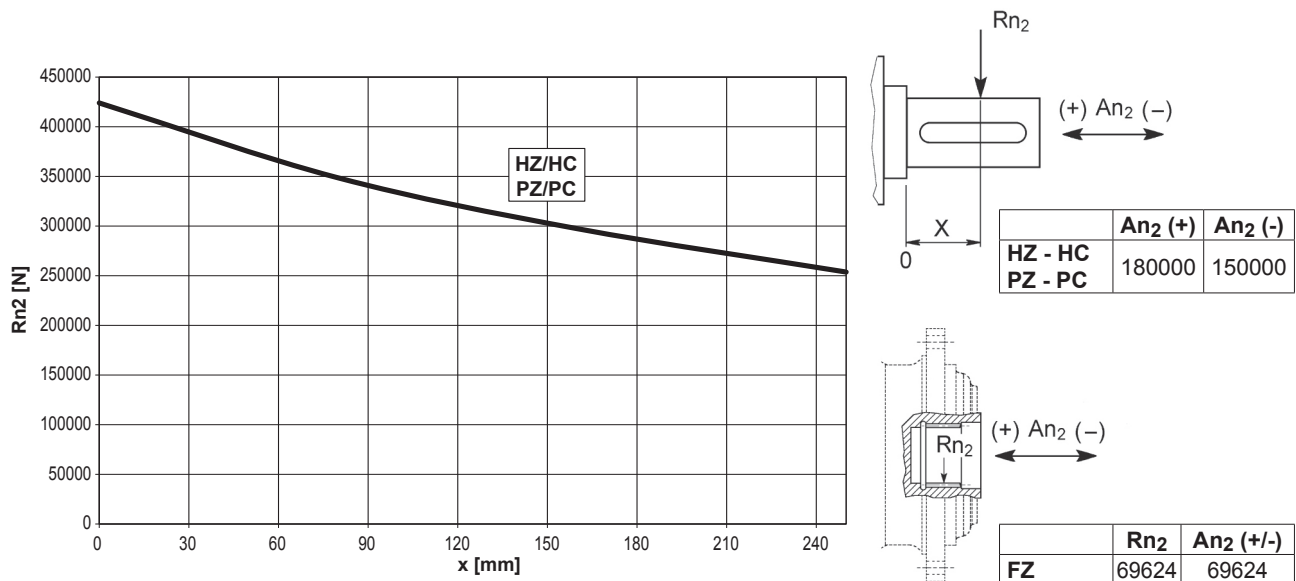


**317M L**

**317M R**

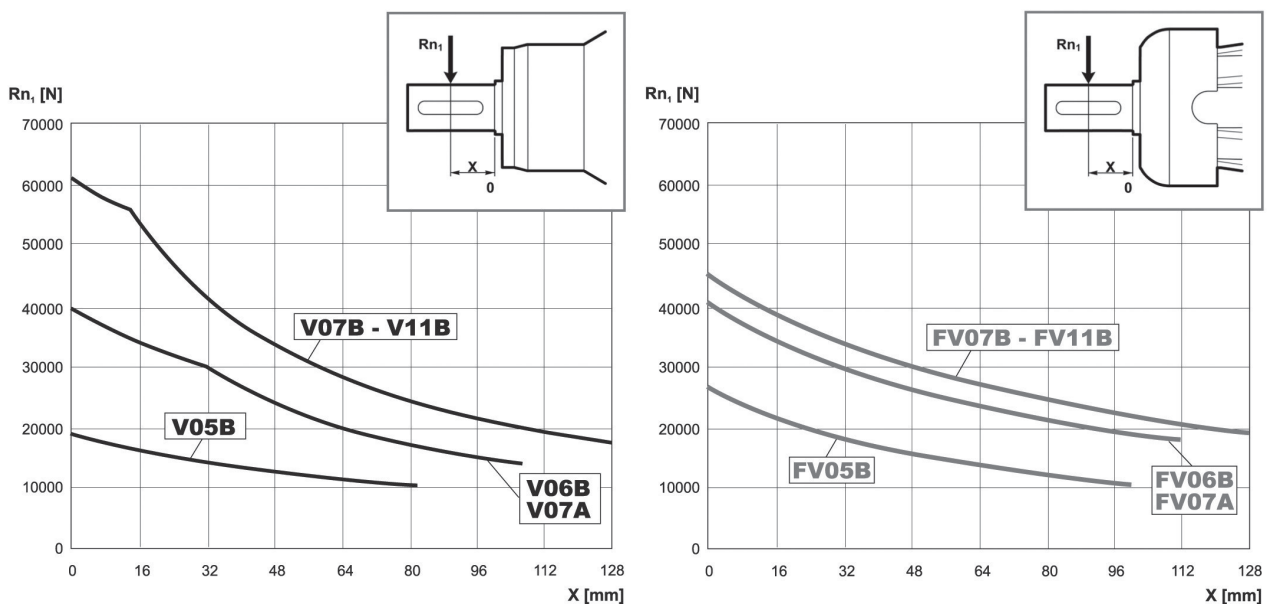
**3/V 17M L**

An der Abtriebswelle zulässige Radial- und Axialkräfte für einen Wert von  $F_{h2} : n_2 \cdot h = 100000$



Korrekturfaktor $f_{h2}$ für Wellenbelastungen	$F_{h2} = n_2 \cdot h$						
		10000	25000	50000	100000	500000	1000000
	$f_{h2}$	FZ	2.15	1.59	1.26	1.00	0.58
	HZ - HC - PZ - PC	1.50	1.50	1.23	1.00	0.62	0.50

An der Antriebswelle zulässige Radiallasten für einen Wert von  $F_{h1} : n_1 \cdot h = 250000$





Korrekturfaktor $f_{h1}$ für Wellenbelastungen	$F_{h1} = n_1 \cdot h$						
		250000	500000	1000000	2000000	5000000	10000000
$f_{h1}$		1	0.79	0.63	0.50	0.37	0.29

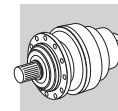
# 317M L



408

# 207490 Nm

n <sub>1</sub> min <sup>-1</sup>		i	n <sub>2</sub> min <sup>-1</sup>	M <sub>n2</sub> Nm	P <sub>n1</sub> kW	P <sub>t</sub> kW	P (IEC) 	Rn <sub>2</sub> [N]					M <sub>2 max</sub> Nm
								MC	MZ	HC/PC	HZ/PZ	FZ	
1500	317ML3	58.1	25.8	111900	150	35	180 ... 250	—	—	236500	251200	50800	393000
	317ML3	69.3	21.6	115100	150	35	180 ... 250	—	—	249300	264900	53800	393000
	317ML3	89.0	16.9	121100	150	35	180 ... 250	—	—	268700	285500	58500	393000
	317ML3	106	14.2	125900	150	35	180 ... 250	—	—	282900	300500	61900	393000
	317ML3	116	12.9	155100	150	35	180 ... 250	—	—	291000	309100	63900	393000
	317ML3	138	10.9	162800	150	35	180 ... 250	—	—	306300	325400	67700	393000
	317ML3	166	9.1	121300	126	35	180 ... 250	—	—	314300	333900	72000	393000
	317ML3	179	8.4	144000	138	35	180 ... 250	—	—	314300	333900	73900	393000
	317ML3	213	7.1	145600	118	35	180 ... 250	—	—	314300	333900	78200	393000
	317ML3	252	5.9	113800	78	35	180 ... 250	—	—	314300	333900	82800	393000
	317ML4	378	4.0	181400	60	18.0	132 ... 200	—	—	324900	345100	94800	393000
	317ML4	449	3.3	184400	60	18.0	132 ... 200	—	—	332900	353700	100300	393000
	317ML4	493	3.0	166900	60	18.0	132 ... 200	—	—	337400	358400	103500	393000
	317ML4	552	2.7	193500	60	18.0	132 ... 200	—	—	342900	364300	107500	393000
	317ML4	619	2.4	167300	48	18.0	132 ... 200	—	—	348500	370300	111600	393000
	317ML4	719	2.1	169400	42	18.0	132 ... 200	—	—	356100	378300	117400	393000
	317ML4	792	1.9	193700	43	18.0	132 ... 200	—	—	361100	383600	121200	393000
	317ML4	904	1.7	156000	31	18.0	132 ... 200	—	—	367900	390900	126700	393000
	317ML4	1032	1.5	174400	30	18.0	132 ... 200	—	—	375000	398400	132400	393000
	317ML4	1134	1.3	156000	24.4	18.0	132 ... 200	—	—	380100	403800	136600	393000
317ML4	1318	1.1	156000	21.0	18.0	132 ... 200	—	—	388300	412500	143700	393000	
317ML4	1595	0.94	156000	17.4	18.0	132 ... 200	—	—	399000	423900	150000	393000	
317ML4	1893	0.79	150300	14.1	18.0	132 ... 200	—	—	408900	434400	150000	393000	
1000	317ML2	16.9	59	104300	250	66	—	—	—	184500	196000	38500	393000
	317ML2	22.1	45	109800	250	66	—	—	—	199800	212300	42100	393000
	317ML2	26.6	38	106800	250	66	—	—	—	211200	224400	44800	393000
	317ML2	28.4	35	123400	250	66	—	—	—	215300	228800	45700	393000
	317ML2	34.1	29.3	126000	250	66	—	—	—	227600	241800	48700	393000



317M L	408	207490 Nm
--------	-----	-----------

n <sub>1</sub> min <sup>-1</sup>		i	n <sub>2</sub> min <sup>-1</sup>	M <sub>n2</sub> Nm	P <sub>n1</sub> kW	P <sub>t</sub> kW	P (IEC)	Rn <sub>2</sub> [N]					M <sub>2 max</sub> Nm	
								MC	MZ	HC/PC	HZ/PZ	FZ		
1000	317ML2	40.5	24.7	113000	250	66	—	—	—	239700	254600	51500	393000	
	317ML3	58.1	17.2	126300	150	42	180 ... 250	—	—	267100	283700	58100	393000	
	317ML3	69.3	14.4	130000	150	42	180 ... 250	—	—	281600	299200	61600	393000	
	317ML3	89.0	11.2	136800	150	42	180 ... 250	—	—	303500	322400	67000	393000	
	317ML3	106	9.5	142200	150	42	180 ... 250	—	—	314300	333900	70900	393000	
	317ML3	116	8.6	166900	150	42	180 ... 250	—	—	314300	333900	73200	393000	
	317ML3	138	7.3	166900	139	42	180 ... 250	—	—	314300	333900	77400	393000	
	317ML3	166	6.0	121300	84	42	180 ... 250	—	—	314300	333900	82400	393000	
	317ML3	179	5.6	147900	95	42	180 ... 250	—	—	314300	333900	84600	393000	
	317ML3	213	4.7	149600	81	42	180 ... 250	—	—	317100	336800	89500	393000	
	317ML3	252	4.0	118800	54	42	180 ... 250	—	—	324900	345200	94800	393000	
	317ML4	378	2.6	194400	60	21.6	132 ... 200	—	—	344200	365700	108500	393000	
	317ML4	449	2.2	193700	51	21.6	132 ... 200	—	—	352800	374800	114800	393000	
	317ML4	493	2.0	169800	41	21.6	132 ... 200	—	—	357500	379800	118500	393000	
	317ML4	552	1.8	200100	43	21.6	132 ... 200	—	—	363300	386000	123000	393000	
	317ML4	619	1.6	172900	33	21.6	132 ... 200	—	—	369300	392300	127800	393000	
	317ML4	719	1.4	175100	28.8	21.6	132 ... 200	—	—	377300	400900	134400	393000	
	317ML4	792	1.3	193700	28.9	21.6	132 ... 200	—	—	382600	406400	138800	393000	
	317ML4	904	1.1	156000	20.4	21.6	132 ... 200	—	—	389900	414200	145000	393000	
	317ML4	1032	0.97	179800	20.6	21.6	132 ... 200	—	—	397300	422100	150000	393000	
	317ML4	1134	0.88	156000	16.3	21.6	132 ... 200	—	—	402700	427800	150000	393000	
	317ML4	1318	0.76	156000	14.0	21.6	132 ... 200	—	—	411500	437100	150000	393000	
	317ML4	1595	0.63	156000	11.6	21.6	132 ... 200	—	—	422800	449200	150000	393000	
	317ML4	1893	0.53	150300	9.4	21.6	132 ... 200	—	—	433300	460300	150000	393000	
	500	317ML2	16.9	29.5	126900	250	110	—	—	—	227200	241400	48500	393000
		317ML2	22.1	22.6	133100	250	110	—	—	—	246000	261300	53000	393000
		317ML2	26.6	18.8	114100	239	110	—	—	—	260100	276300	56400	393000
		317ML2	28.4	17.6	133500	250	110	—	—	—	265100	281600	57600	393000
		317ML2	34.1	14.7	136300	222	110	—	—	—	280300	297700	61300	393000
		317ML2	40.5	12.3	113000	155	110	—	—	—	295000	313400	64900	393000
		317ML3	58.1	8.6	155500	150	70	180 ... 250	—	—	314300	333900	73200	393000
		317ML3	69.3	7.2	160000	132	70	180 ... 250	—	—	314300	333900	77600	393000
317ML3		89.0	5.6	168400	109	70	180 ... 250	—	—	314300	333900	84400	393000	
317ML3		106	4.7	173900	94	70	180 ... 250	—	—	316800	336500	89300	393000	
317ML3		116	4.3	166900	83	70	180 ... 250	—	—	321000	341000	92200	393000	
317ML3		138	3.6	166900	70	70	180 ... 250	—	—	329000	349500	97600	393000	
317ML3		166	3.0	121300	42	70	180 ... 250	—	—	337800	358900	103800	393000	
317ML3		179	2.8	154800	50	70	180 ... 250	—	—	341600	362900	106500	393000	
317ML3		213	2.4	156000	42	70	180 ... 250	—	—	350100	371900	112800	393000	
317ML3		252	2.0	133700	30	70	180 ... 250	—	—	358700	381100	119400	393000	
317ML4		378	1.3	204000	32	36	132 ... 200	—	—	380100	403800	136700	393000	
317ML4		449	1.1	193700	25.5	36	132 ... 200	—	—	389500	413800	144700	393000	
317ML4		493	1.0	179600	21.6	36	132 ... 200	—	—	394700	419400	149300	393000	
317ML4		552	0.91	207500	22.2	36	132 ... 200	—	—	401100	426200	150000	393000	
317ML4		619	0.81	179800	17.2	36	132 ... 200	—	—	407800	433200	150000	393000	
317ML4		719	0.70	179800	14.8	36	132 ... 200	—	—	416600	442600	150000	393000	
317ML4		792	0.63	193700	14.5	36	132 ... 200	—	—	422400	448800	150000	393000	
317ML4		904	0.55	156000	10.2	36	132 ... 200	—	—	430400	457300	150000	393000	
317ML4		1032	0.48	179800	10.3	36	132 ... 200	—	—	438700	466100	150000	393000	
317ML4		1134	0.44	156000	8.1	36	132 ... 200	—	—	442000	470000	150000	393000	
317ML4		1318	0.38	156000	7.0	36	132 ... 200	—	—	442000	470000	150000	393000	
317ML4		1595	0.31	156000	5.8	36	132 ... 200	—	—	442000	470000	150000	393000	
317ML4		1893	0.26	150300	4.7	36	132 ... 200	—	—	442000	470000	150000	393000	



B

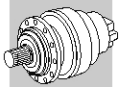
# 317M R



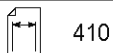
410

# 207490 Nm

n <sub>1</sub> min <sup>-1</sup>		i	n <sub>2</sub> min <sup>-1</sup>	M <sub>n2</sub> Nm	P <sub>n1</sub> kW	Pt kW	P (IEC) 	Rn <sub>2</sub> [N]					M <sub>2</sub> max Nm
								MC	MZ	HC/PC	HZ/PZ	FZ	
1500	317MR3B	49.8	30	47700	150	90	180 ... 250	—	—	225800	239800	48200	393000
	317MR3B	64.9	23.1	62100	150	90	180 ... 250	—	—	244400	259700	52700	393000
	317MR3B	78.1	19.2	74800	150	90	180 ... 250	—	—	258400	274500	56000	393000
	317MR3B	83.3	18.0	79700	150	90	180 ... 250	—	—	263400	279900	57200	393000
	317MR3B	100	15.0	96000	150	90	180 ... 250	—	—	278500	295900	60900	393000
	317MR3B	119	12.6	106600	150	90	180 ... 250	—	—	293200	311500	64400	393000
	317MR3C	68.9	21.8	60200	150	100	180 ... 250	—	—	248900	264400	53700	393000
	317MR3C	89.8	16.7	78400	150	100	180 ... 250	—	—	269500	286300	58700	393000
	317MR3C	108	13.9	94400	150	100	180 ... 250	—	—	284900	302700	62400	393000
	317MR3C	115	13.0	100600	150	100	180 ... 250	—	—	290400	308600	63800	393000
	317MR3C	139	10.8	121200	150	100	180 ... 250	—	—	307100	326200	67800	393000
	317MR3C	165	9.1	113100	118	100	180 ... 250	—	—	314300	333900	71800	393000
	317MR4	220	6.8	81500	66	50	132 ... 200	—	—	314300	333900	79000	393000
	317MR4	262	5.7	97200	66	50	132 ... 200	—	—	314300	333900	83800	393000
	317MR4	336	4.5	124700	66	50	132 ... 200	—	—	319400	339400	91100	393000
	317MR4	399	3.8	148000	66	50	132 ... 200	—	—	327400	347800	96500	393000
317MR4	438	3.4	156700	63	50	132 ... 200	—	—	331800	352500	99500	393000	
317MR4	520	2.9	166200	57	50	132 ... 200	—	—	340000	361200	105400	393000	
317MR4	626	2.4	121500	34	50	132 ... 200	—	—	349100	370900	112100	393000	
317MR4	677	2.2	156000	41	50	132 ... 200	—	—	353000	375100	115000	393000	
317MR4	803	1.9	155900	34	50	132 ... 200	—	—	361800	384300	121800	393000	
317MR4	953	1.6	139100	25.9	50	132 ... 200	—	—	370700	393900	129000	393000	
1000	317MR3B	49.8	20.1	53800	124	108	180 ... 250	—	—	255000	270900	55200	393000
	317MR3B	64.9	15.4	70200	124	108	180 ... 250	—	—	276100	293300	60300	393000
	317MR3B	78.1	12.8	84400	124	108	180 ... 250	—	—	291800	310000	64100	393000
	317MR3B	83.3	12.0	90000	124	108	180 ... 250	—	—	297500	316100	65500	393000
	317MR3B	100	10.0	108400	124	108	180 ... 250	—	—	314300	333900	69700	393000
	317MR3B	119	8.4	113300	109	108	180 ... 250	—	—	314300	333900	73800	393000
	317MR3C	68.9	14.5	67900	113	120	180 ... 250	—	—	281100	298600	61500	393000
	317MR3C	89.8	11.1	88600	113	120	180 ... 250	—	—	304400	323300	67200	393000
317MR3C	108	9.2	106000	112	120	180 ... 250	—	—	314300	333900	71500	393000	





# 317M R



410

# 207490 Nm

n <sub>1</sub> min <sup>-1</sup>		i	n <sub>2</sub> min <sup>-1</sup>	M <sub>n2</sub> Nm	P <sub>n1</sub> kW	Pt kW	P (IEC) 	Rn <sub>2</sub> [N]					M <sub>2 max</sub> Nm	
								MC	MZ	HC/PC	HZ/PZ	FZ		
1000	317MR3C	115	8.7	113700	113	120	180 ... 250	—	—	314300	333900	73000	393000	
	317MR3C	139	7.2	135200	112	120	180 ... 250	—	—	314300	333900	77700	393000	
	317MR3C	165	6.1	113800	79	120	180 ... 250	—	—	314300	333900	82200	393000	
	317MR4	220	4.6	92000	50	60	132 ... 200	—	—	318500	338400	90500	393000	
	317MR4	262	3.8	109800	50	60	132 ... 200	—	—	326600	347000	96000	393000	
	317MR4	336	3.0	140900	50	60	132 ... 200	—	—	338500	359600	104300	393000	
	317MR4	399	2.5	167200	50	60	132 ... 200	—	—	346900	368500	110400	393000	
	317MR4	438	2.3	168200	45	60	132 ... 200	—	—	351600	373500	113900	393000	
	317MR4	520	1.9	170500	39	60	132 ... 200	—	—	360300	382700	120600	393000	
	317MR4	626	1.6	123500	23.3	60	132 ... 200	—	—	369900	393000	128300	393000	
	317MR4	677	1.5	156000	27.3	60	132 ... 200	—	—	374100	397400	131700	393000	
	317MR4	803	1.2	155900	23.0	60	132 ... 200	—	—	383400	407300	139400	393000	
	317MR4	953	1.0	149000	18.5	60	132 ... 200	—	—	392900	417400	147600	393000	
	500	317MR3B	49.8	10.0	66300	76	180	180 ... 250	—	—	313900	333500	69500	393000
		317MR3B	64.9	7.7	86400	76	180	180 ... 250	—	—	314300	333900	75900	393000
		317MR3B	78.1	6.4	104000	76	180	180 ... 250	—	—	314300	333900	80800	393000
		317MR3B	83.3	6.0	110800	76	180	180 ... 250	—	—	314300	333900	82500	393000
		317MR3B	100	5.0	133400	76	180	180 ... 250	—	—	314400	334000	87800	393000
317MR3B		119	4.2	117600	57	180	180 ... 250	—	—	322200	342300	92900	393000	
317MR3C		68.9	7.3	83600	70	200	180 ... 250	—	—	314300	333900	77500	393000	
317MR3C		89.8	5.6	109000	70	200	180 ... 250	—	—	314300	333900	84600	393000	
317MR3C		108	4.6	121300	64	200	180 ... 250	—	—	317800	337700	90000	393000	
317MR3C		115	4.3	139900	70	200	180 ... 250	—	—	320800	340800	92000	393000	
317MR3C		139	3.6	152200	63	200	180 ... 250	—	—	329400	349900	97800	393000	
317MR3C		165	3.0	124300	43	200	180 ... 250	—	—	337500	358600	103600	393000	
317MR4		220	2.3	112800	30	100	132 ... 200	—	—	351700	373600	114000	393000	
317MR4		262	1.9	135100	31	100	132 ... 200	—	—	360600	383100	120900	393000	
317MR4		336	1.5	173400	31	100	132 ... 200	—	—	373700	397000	131400	393000	
317MR4		399	1.3	186800	27.7	100	132 ... 200	—	—	383000	406900	139100	393000	
317MR4		438	1.1	177900	24.0	100	132 ... 200	—	—	388200	412400	143500	393000	
317MR4		520	0.96	179800	20.5	100	132 ... 200	—	—	397800	422600	150000	393000	
317MR4		626	0.80	125800	11.9	100	132 ... 200	—	—	408400	433900	150000	393000	
317MR4		677	0.74	156000	13.6	100	132 ... 200	—	—	413000	436800	150000	393000	
317MR4		803	0.62	155900	11.5	100	132 ... 200	—	—	423300	449700	150000	393000	
317MR4		953	0.52	150300	9.3	100	132 ... 200	—	—	433700	460800	150000	393000	

B